

Product: Eichrom's TRU Resin cartridges
Lot #: TRSR8A

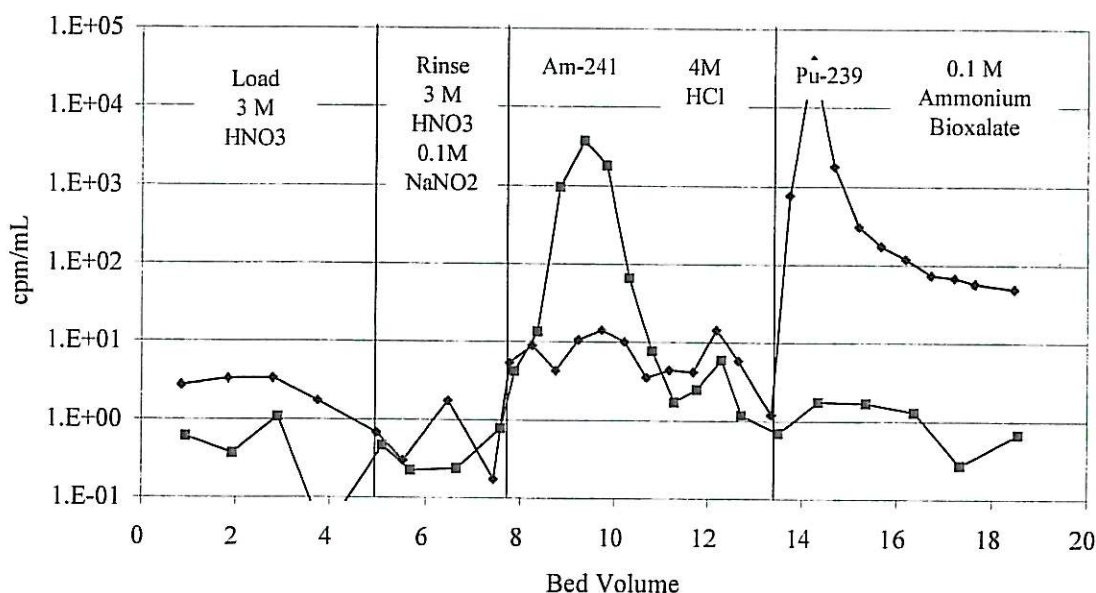
a GCI Company

Eichrom's TRU Resin cartridge Lot # TRSR8A has been manufactured according to Eichrom's standard operating procedures. This lot has been tested in accordance with Eichrom's quality assurance policy and procedures. The resin used to manufacture this lot of product meets all Eichrom quality specifications.

ANALYSIS RESULTS

Test Value	Specification	Result
Appearance	White beads	Pass
Distribution Ratio, Eu in 3.1 N nitric acid	≥ 60	91
% ^{241}Am stripped in 4M HCl		
Least acceptable mean (5 rep)	95.0	99.3
Max. standard deviation	2.5	0.2
% ^{241}Am stripped in 0.1M ammonium bioxalate		
Maximum acceptable mean (5 rep)	1.0	0.4
Max. standard deviation	0.5	0.1
% ^{239}Pu stripped in 0.1M ammonium bioxalate		
Least acceptable mean (5 rep)	95.0	97.4
Max. standard deviation	2.5	1.0
% ^{239}Pu stripped in 4M HCl		
Maximum acceptable mean (5 rep)	1.0	0.2
Max. standard deviation	0.5	0.1
Extractant distribution ratio, ^{241}Am strip in 0.05M HNO_3	<0.50	0.31

TRU Resin Elution Curve



Jill Bryant
Quality Control Chemist

Jill Bryant

January 25, 2008