

Certificate of Analysis

No. CA07025

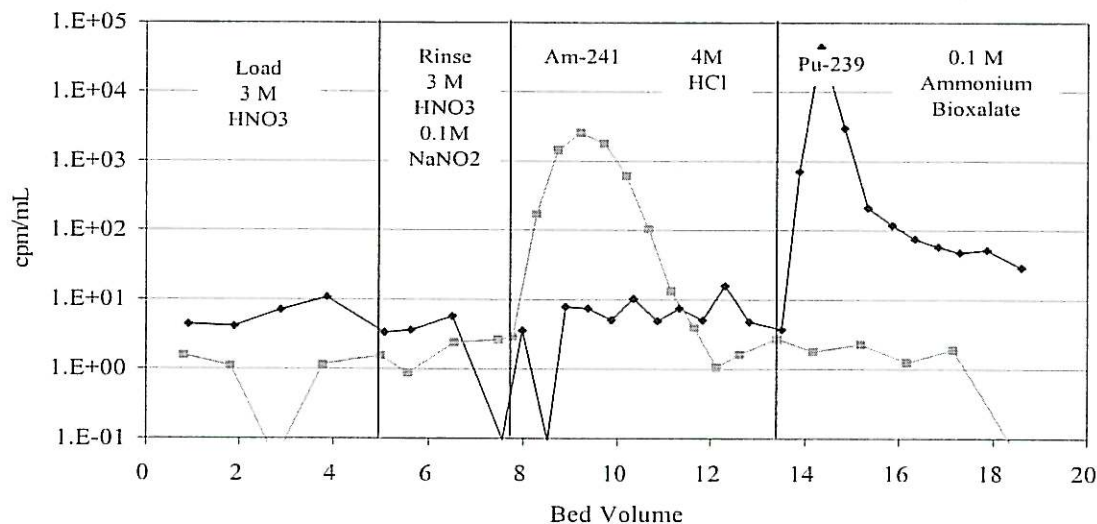
Product: Eichrom's TRU Resin
Lot #: TRA02017

Eichrom's TRU Resin Lot # TRA02017 has been manufactured according to Eichrom's standard operating procedures. This lot has been tested in accordance with Eichrom's quality assurance policy and procedures. This lot of product meets all Eichrom quality specifications.

ANALYSIS RESULTS

Test Value	Specification	Result
Appearance	White beads	Pass
Distribution Ratio, Eu in 3.1 N nitric acid	≥ 60	98
% ^{241}Am stripped in 4M HCl		
Least acceptable mean (5 rep)	95.0	99.4
Max. standard deviation	2.5	0.3
% ^{241}Am stripped in 0.1M ammonium bioxalate		
Maximum acceptable mean (5 rep)	1.0	0.4
Max. standard deviation	0.5	0.2
% ^{239}Pu stripped in 0.1M ammonium bioxalate		
Least acceptable mean (5 rep)	95.0	97.6
Max. standard deviation	2.5	0.7
% ^{239}Pu stripped in 4M HCl		
Maximum acceptable mean (5 rep)	1.0	0.1
Max. standard deviation	0.5	0.0
Extractant distribution ratio, ^{241}Am strip in 0.05M HNO_3	<0.50	0.25
Raw support resin gravity flow rate, mL/min	0.60-0.80	0.77

TRU Resin Elution Curve



Eichrom recommends the use of gravity flow with 100-150 μm beads, "A" grade.

Joel Williamson
Joel Williamson
Senior Quality Control Chemist

Prepared: February 21, 2007