

**Certificate of Analysis**  
No. CA10015

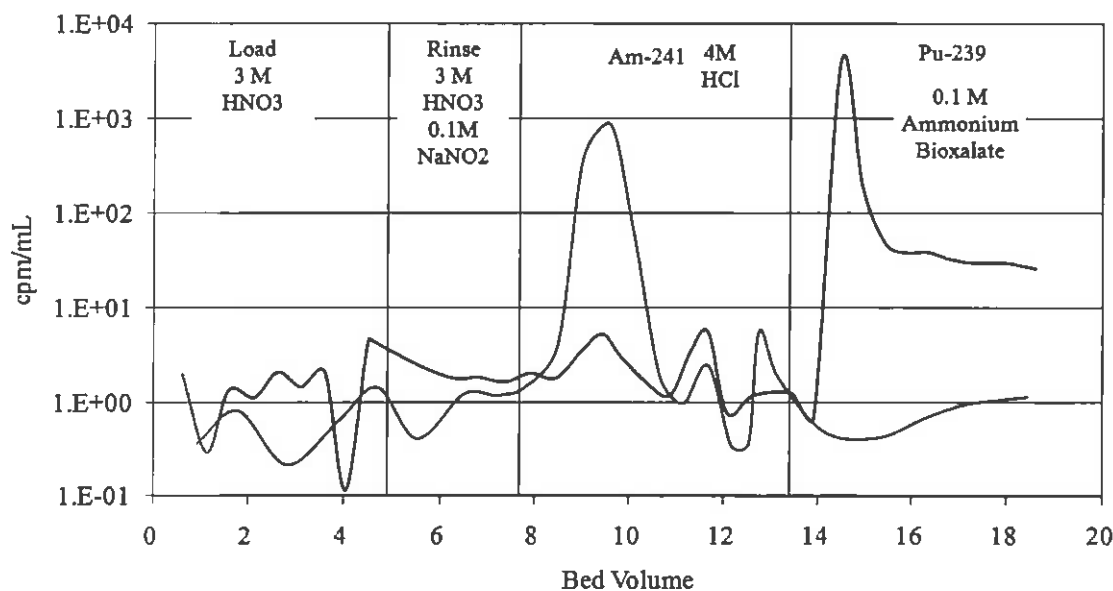
Product: Eichrom's TRU Resin  
Lot #: TRA012710

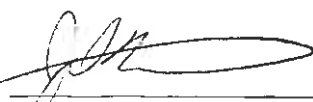
Eichrom's TRU Resin Lot # TRA012710 has been manufactured according to Eichrom's standard operating procedures. This lot has been tested in accordance with Eichrom's quality assurance policy and procedures. This lot of product meets all Eichrom quality specifications.

**ANALYSIS RESULTS**

Test Value	Specification	Result
Appearance	White beads	Pass
Distribution Ratio, Eu in 3.1 N nitric acid	$\geq 60$	95
% $^{241}\text{Am}$ stripped in 4M HCl		
Least acceptable mean (5 rep)	95.0	100.3
Max. standard deviation	2.5	0.7
% $^{241}\text{Am}$ stripped in 0.1M ammonium bioxalate		
Maximum acceptable mean (5 rep)	1.0	0.0
Max. standard deviation	0.5	0.4
% $^{239}\text{Pu}$ stripped in 0.1M ammonium bioxalate		
Least acceptable mean (5 rep)	95.0	97.5
Max. standard deviation	2.5	0.5
% $^{239}\text{Pu}$ stripped in 4M HCl		
Maximum acceptable mean (5 rep)	1.0	0.3
Max. standard deviation	0.5	0.3
Extractant distribution ratio, $^{241}\text{Am}$ strip in 0.05M $\text{HNO}_3$	$<0.50$	0.28
Raw support resin gravity flow rate, mL/min	0.60-0.80	0.72

TRU Resin Elution Curve



  
Joel Williamson  
Quality Manager

Prepared: February 4, 2010