

Product: Eichrom's TEVA Resin  
Lot #: TES07197

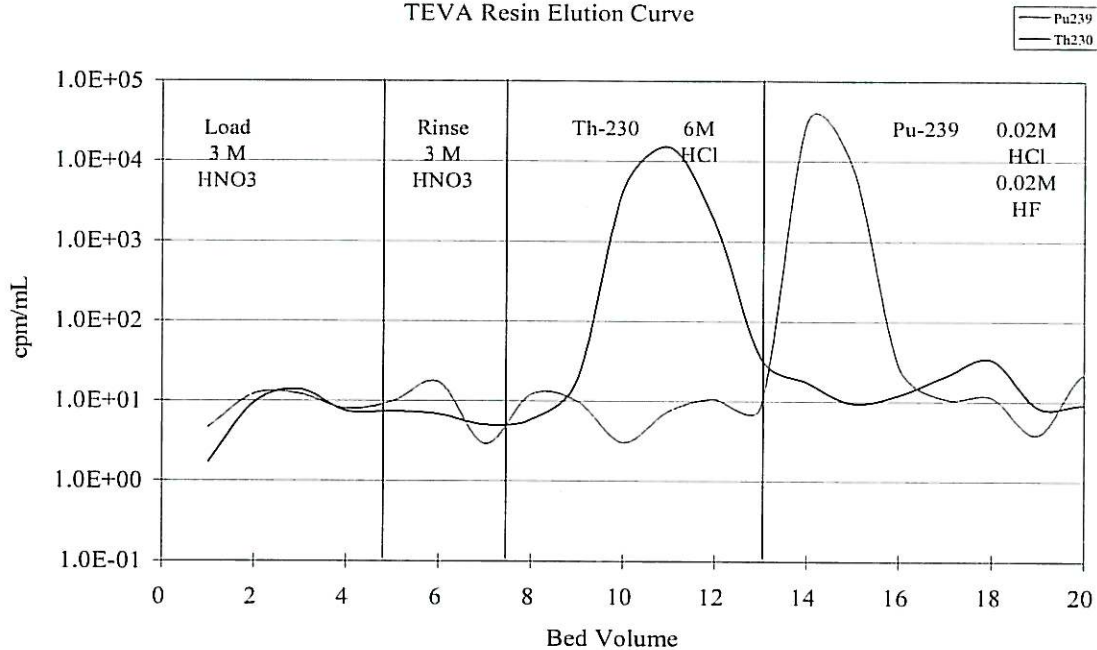
a GCI Company

Eichrom's TEVA Resin Lot # TES07197 has been manufactured according to Eichrom's standard operating procedures. This lot has been tested in accordance with Eichrom's quality assurance policy and procedures. This lot of product meets all Eichrom quality specifications.

**ANALYSIS RESULTS**

| <u>Test Value</u>                                    | <u>Specification</u> | <u>Result</u> |
|--|----------------------|---------------|
| Appearance   | White beads          | Pass          |
| Distribution Ratio, 3.0 N nitric acid                | >200                 | 386           |
| % <sup>230</sup> Th stripped in 6M HCl               |                      |               |
| Least acceptable mean (5 rep)                        | 93.0                 | 99.6          |
| Max. standard deviation                              | 2.5                  | 0.1           |
| % <sup>230</sup> Th stripped in 0.02M HCl + 0.02M HF |                      |               |
| Maximum acceptable mean (5 rep)                      | 2.0                  | 0.1           |
| Max. standard deviation                              | 1.5                  | 0.1           |
| % <sup>239</sup> Pu stripped in 0.02M HCl + 0.02M HF |                      |               |
| Least acceptable mean (5 rep)                        | 90.0                 | 96.2          |
| Max. standard deviation                              | 2.5                  | 2.3           |
| % <sup>239</sup> Pu stripped in 6M HCl               |                      |               |
| Maximum acceptable mean (5 rep)                      | 1.0                  | 0.1           |
| Max. standard deviation                              | 0.5                  | 0.1           |

TEVA Resin Elution Curve



*Joel Williamson*  
Joel Williamson  
Quality Manager

Prepared: August 21, 2007