

Certificate of Analysis No. CA07097

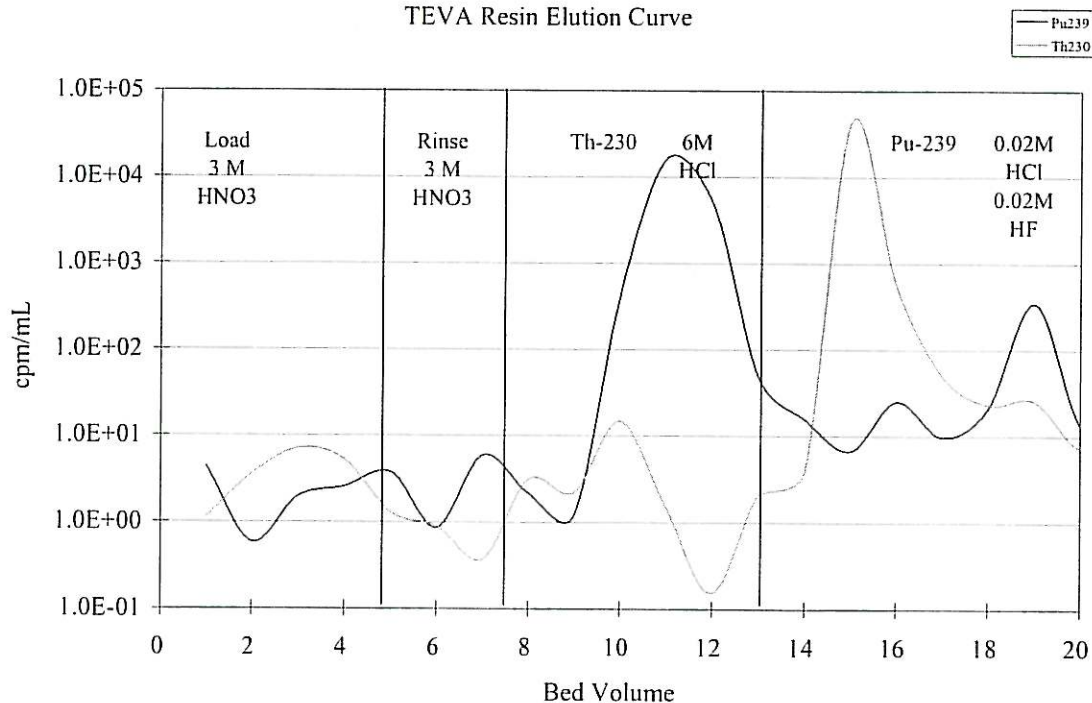
Product: Eichrom's TEVA Resin
Lot #: TEA06057

Eichrom's TEVA Resin Lot # TEA06057 has been manufactured according to Eichrom's standard operating procedures. This lot has been tested in accordance with Eichrom's quality assurance policy and procedures. This lot of product meets all Eichrom quality specifications.

ANALYSIS RESULTS

Test Value	Specification	Result
Appearance	White beads	Pass
Distribution Ratio, 3.0 N nitric acid	>200	403
% ²³⁰ Th stripped in 6M HCl		
Least acceptable mean (5 rep)	93.0	98.8
Max. standard deviation	2.5	1.2
% ²³⁰ Th stripped in 0.02M HCl + 0.02M HF		
Maximum acceptable mean (5 rep)	2.0	1.1
Max. standard deviation	1.5	1.2
% ²³⁹ Pu stripped in 0.02M HCl + 0.02M HF		
Least acceptable mean (5 rep)	90.0	99.7
Max. standard deviation	2.5	0.2
% ²³⁹ Pu stripped in 6M HCl		
Maximum acceptable mean (5 rep)	1.0	0.0
Max. standard deviation	0.5	0.1
Raw support resin flow rate, mL/min	0.60-0.80	0.78

TEVA Resin Elution Curve



Joel Williamson
Joel Williamson
Quality Manager

Prepared: July 11, 2007