

## Certificate of Analysis

No. CA06062

Product: Eichrom's TEVA Resin

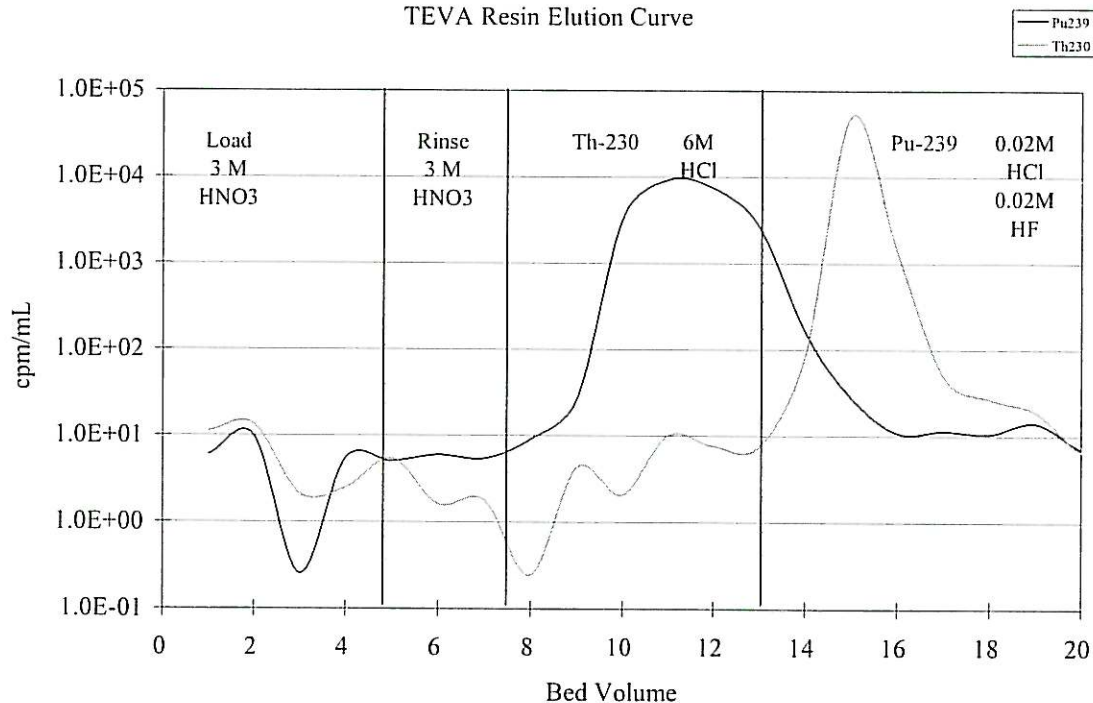
Lot #: TEA05186

Eichrom's TEVA Resin Lot # TEA05186 has been manufactured according to Eichrom's standard operating procedures. This lot has been tested in accordance with Eichrom's quality assurance policy and procedures. This lot of product meets all Eichrom quality specifications.

## ANALYSIS RESULTS

Test Value	Specification	Result
Appearance	White beads	Pass
Distribution Ratio, 3.0 N nitric acid	>200	360
% <sup>230</sup> Th stripped in 6M HCl		
Least acceptable mean (5 rep)	93.0	99.6
Max. standard deviation	2.5	0.2
% <sup>230</sup> Th stripped in 0.02M HCl + 0.02M HF		
Maximum acceptable mean (5 rep)	2.0	0.4
Max. standard deviation	1.5	0.1
% <sup>239</sup> Pu stripped in 0.02M HCl + 0.02M HF		
Least acceptable mean (5 rep)	90.0	98.0
Max. standard deviation	2.5	1.1
% <sup>239</sup> Pu stripped in 6M HCl		
Maximum acceptable mean (5 rep)	1.0	0.1
Max. standard deviation	0.5	0.1
Raw support resin flow rate, mL/min	0.60-0.80	0.75

TEVA Resin Elution Curve



*Joel Williamson*  
 Joel Williamson  
 Senior Quality Control Chemist

Prepared: June 19, 2006