

expertise. commitment. results.

Certificate of Analysis

No. CA06021

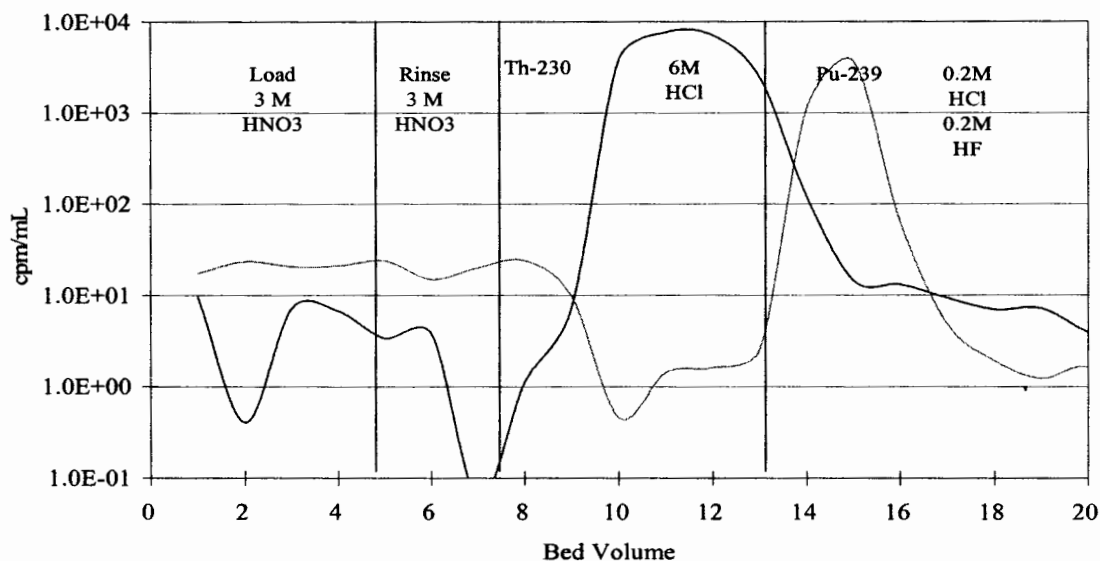
Product: Eichrom's TEVA Resin
Lot #: TEA01316

Eichrom's TEVA Resin Lot # TEA01316 has been manufactured according to Eichrom's standard operating procedures. This lot has been tested in accordance with Eichrom's quality assurance policy and procedures. This lot of product meets all Eichrom quality specifications.

ANALYSIS RESULTS

| Test Value | Specification | Result |
|--|---------------|--------|
| Appearance | White beads | Pass |
| Distribution Ratio, 3.0 N nitric acid | >200 | 377 |
| % ²³⁰ Th stripped in 6M HCl | | |
| Least acceptable mean | 93.0 | 99.6 |
| Max. standard deviation | 2.5 | 0.3 |
| % ²³⁰ Th stripped in 0.02M HCl + 0.02M HF | | |
| Least acceptable mean | 2.0 | 0.4 |
| Max. standard deviation | 1.5 | 0.1 |
| % ²³⁹ Pu stripped in 0.02M HCl + 0.02M HF | | |
| Least acceptable mean | 90.0 | 97.1 |
| Max. standard deviation | 2.5 | 1.1 |
| % ²³⁹ Pu stripped in 6M HCl | | |
| Least acceptable mean | 1.0 | 0.1 |
| Max. standard deviation | 0.5 | 0.0 |
| Raw support resin flow rate, mL/min | 0.60-0.80 | 0.65 |

TEVA Resin Elution Curve



Joel Williamson
Joel Williamson
Senior Quality Control Chemist

3/15/06

Prepared: March 15, 2006